



The Cost of Absence: How CFOs Can Reclaim Lost ADA Funding

A Strategic Guide to Protecting District Revenue
Through Automated Attendance Interventions

When Academic Crisis Meets **Fiscal Reality**

Every CFO in education knows why they chose public service over private sector paychecks: student success matters. And when students aren't in their seats, districts can't deliver on that mission. The impact of chronic absenteeism on learning outcomes is a big topic of conversation. What isn't as widely discussed is how student absences directly impact district budgets.

The revenue impact hits Average Daily Attendance (ADA) states immediately. When a student isn't in their seat, your district loses funding that day. Funding that could support teachers, programs, and the resources students need to succeed. For CFOs managing tight budgets, empty desks mean lost revenue that adds up quickly.

School district leaders constantly face demands to do more with less. CFOs must recognize that attendance drives revenue just like enrollment management or grant acquisition. Federal funding fluctuation creates ongoing budget challenges, while chronic absenteeism drains ADA funding at unprecedented rates. For the 2023-24 academic year, chronic absenteeism stands at 23.5%, down from more than 28% in 2021-22, yet still significantly above the ~15% pre-pandemic baseline.

For a 5,000-student district in an ADA state, each percentage point increase in chronic absenteeism costs \$75,000 to \$150,000 annually in lost state funding. With current absenteeism rates, many districts are leaving hundreds of thousands of dollars on the table. Money that could fund additional teachers, programs, or infrastructure.

Creating sustainable systems that protect your district's financial foundation while improving educational outcomes is critical. When students attend class consistently, test scores improve, graduation rates increase, and districts become more attractive to families considering school choice options, all of which positively impact the budget.

Pro Tip

Many CFOs track enrollment meticulously but overlook the revenue impact of attendance patterns. ADA-based funding means that two districts with identical enrollment can receive vastly different funding based solely on their attendance rates. With nearly **9.4 million students chronically absent nationwide (1 in 5)**, the scale of lost revenue is staggering.

What Every CFO Should Know About ADA Funding

Average Daily Attendance (ADA) funding operates on a simple principle: districts receive funding based on how many students actually attend school each day, not how many are enrolled. This seemingly straightforward formula creates complex budget implications that many finance leaders underestimate.

Your district's ADA multipliers matter. Here's an example of how two major states structure their funding formulas.

State	Base Funding	Additional Funding
California	\$10,069 (grades 4-6) to \$12,327 (high school)	+20% for each EL, low-income, or foster student +up to 65% for high-need districts (with 55% or more qualifying students)
Texas	Basic Allotment of \$6,160 per student (no added needs)	+22.5% to 27.5% for low-income students +10% for English learners +10% to 47% for career & technical education +10% to 15% for students receiving special education services +\$275 per high school student +6% to 33% for small or mid-size districts Texas also redistributes local revenue through a "recapture" system to ensure equity

Students who miss two days per month (still considered "good" attendance) generate only 89% of their potential funding value. Multiply this across hundreds or thousands of students, and the revenue loss becomes massive. In districts serving high-need populations, where weighted funding can push per-student totals well above base rates, every absent student means greater funding loss.

Unlike enrollment growth strategies that take years, attendance interventions can show results within weeks. This makes attendance initiatives among the fastest ways to boost district revenue.

★ Quick Win

Use the [Attendance Impact Calculator](#) to estimate the impact improved attendance rates can have on your district.

The Hidden Costs of Chronic Absenteeism

Districts using automated interventions that combine positive messaging with targeted outreach achieve results that more than pay for themselves. Data from over 430 districts shows up to 45% reduction in chronic absenteeism and 52% increase in excellent attendance. Most districts taking this approach see ROI greater than 100%.

Real examples prove this works. Based on current calculations of ADA funding recovery:

Districts with **3,000 students** recover an average of **\$160,160 annually**

Districts with **10,000 students** recover an average of **\$529,760 annually**

Districts with **25,000 students** recover an average of **\$1,324,400 annually**

These improvements last. A student who becomes chronically absent in elementary school continues that pattern, costing years of lost funding. **Early intervention recovers immediate revenue and protects future funding streams.**

Districts face other hidden costs, which add tens of thousands annually in staff time:

- Teachers' time spent on attendance tracking & interventions instead of instruction
- Administrative staff handling truancy procedures, court filings & family conferences

Research from the prior White House Council of Economic Advisers found that increased chronic absenteeism accounted for 16-27% of post-pandemic test score declines in math and 36-45% of declines in reading. Poor academic performance creates long-term financial pressures through remediation costs, reduced graduation rates, and state accountability consequences that impact funding.

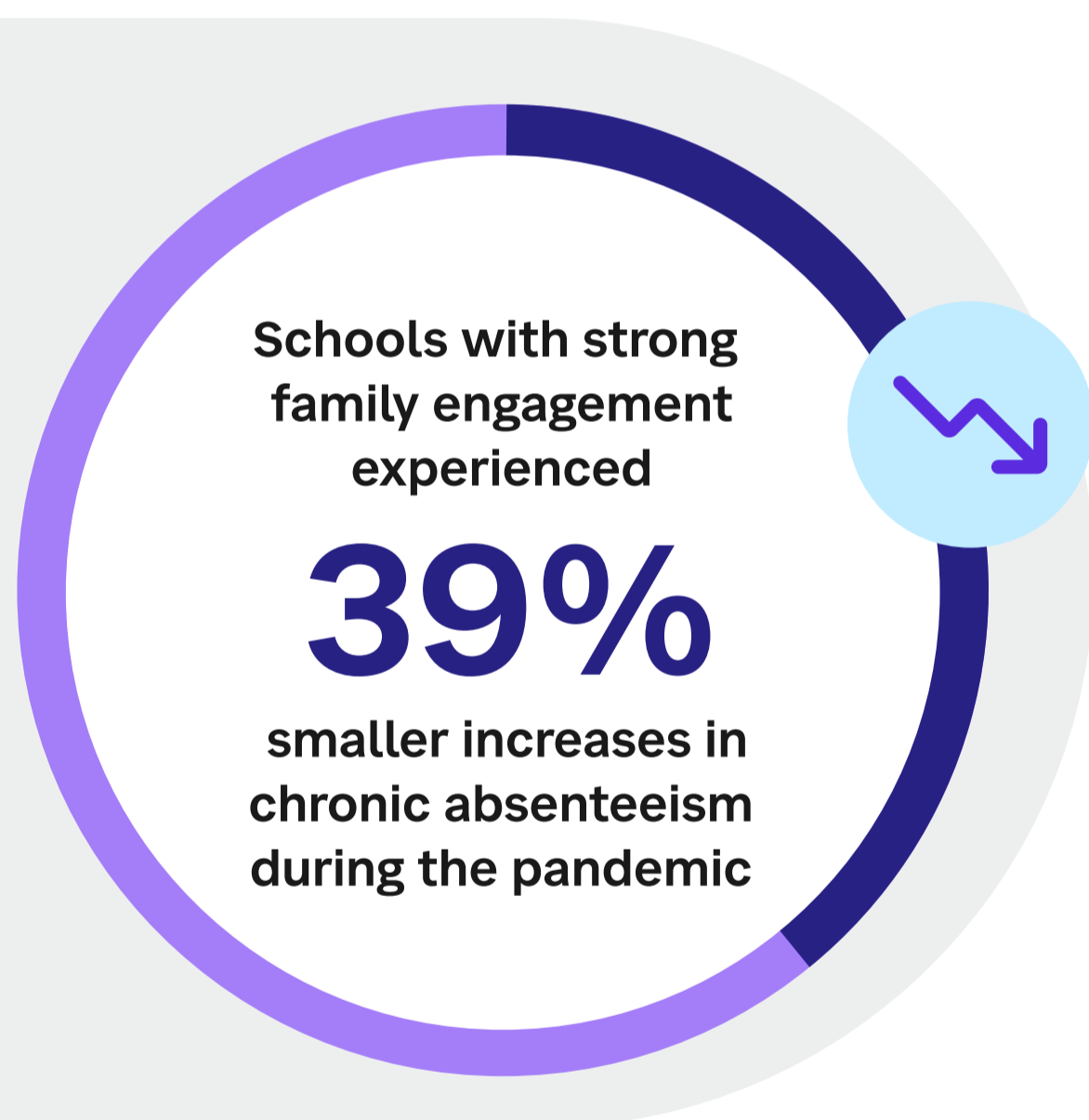


Districts investing in attendance interventions see improvements in other budget-friendly areas. Better attendance correlates with fewer disciplinary issues, improved school climate, and higher family satisfaction. These factors influence enrollment, retention, and community support for funding measures.

Strategic Solution: Automate to Save

Traditional approaches to attendance intervention like manual tracking, paper notices, and reactive responses, are expensive and ineffective. Modern attendance management requires the same systematic approach that you bring to budget planning: data-driven, automated, and scalable.

To make a lasting impact, attendance management requires a people-first approach that connects data, communication, and support systems. Instead of staff spending hours on manual tracking and reactive approaches, effective systems need to identify at-risk students and connect families with the right message at the right time in the right language. This focused engagement is more likely to get students back to class by ensuring messages are received, relevant, and actionable.



Research shows that schools with strong family engagement systems experienced 39% smaller increases in chronic absenteeism during the pandemic. The key is implementing systematic, data-driven interventions that don't burden already stretched staff.

Getting kids in class starts with systems that work together. Districts need solutions that connect data, communication, and processes with one goal: helping students succeed. When tools provide clear insights and efficient processes, attendance improves because everything connects.

Automated systems deliver immediate and measurable financial benefits. Grand Prairie ISD in Texas reported a 32% district "save rate" after implementing automated interventions, meaning those students returned to school after just one intervention. The staff time savings allowed them to focus on more strategic initiatives. Their attendance coordinator noted that the system freed up enough administrative time to be equivalent to hiring an additional part-time employee. Plus, "There are a lot more meaningful conversations about attendance because of this platform," explained Dr. Tameka Lewis, Student Attendance & Dropout Prevention Coordinator.



“

Having all of our students' information in one place allows us to quickly and easily identify which students need intervention and support.

AJ Phillips, Director of Information Technology Services, PWCS

Prince William County Public Schools in Virginia, serving over 89,000 students, found that automated attendance communications resulted in 94% of families responding positively to engagement efforts.

For a district of their size, even small improvements in attendance rates translate to millions in additional ADA funding. “Having all of our students' information in one place allows us to quickly and easily identify which students need intervention and support,” said AJ Phillips, Director of Information Technology Services, PWCS.

CFOs can see the ROI clearly when districts implement effective attendance solutions. **The cost of intervention systems is a fraction of what districts lose annually to chronic absenteeism.**

Attendance Investment Buy-In Action Plan

Calculate Your District's Numbers First

- Total ADA funding at risk based on current chronic absenteeism rates
- Projected recovery based on realistic improvement targets
- Example: Frame "5% reduction in chronic absenteeism" as "\$400,000 in recovered funding"

Use Comparative Data Strategically

- Research neighboring districts' attendance rates
- Translate attendance differences into funding terms
- Show exactly how much additional per-pupil funding your district could receive by matching regional averages

Present Staff Efficiency Alongside Revenue Recovery

- Calculate administrative time currently spent on attendance issues
- Show how automated systems save staff hours while improving outcomes
- Example: "20 hours of weekly staff time saved" resonates with budget-conscious board members

Address Sustainability Concerns

- Emphasize that ADA funding improvements represent recurring revenue increases (unlike one-time grants)
- Position attendance systems as reliable, long-term budget strategies

Frame Around Access and Opportunity

- Highlight that chronic absenteeism disproportionately affects students from low-income families and communities of color
- Show how attendance interventions ensure equal access while protecting funding for these populations

One more data point to use: Strong family engagement impacts attendance outcomes as much as the difference between in-person and remote learning. That's a powerful comparison for boards focused on academic recovery.



Quick Win

Use this [Powerpoint Deck Template](#) for your next presentation

What to Look for in Attendance Solutions

The attendance tracking and intervention technology to support these initiatives exists. Research shows the real impact. And the financial incentives are clear. With federal funding uncertainty and continued budget pressures, you cannot afford to overlook the revenue protection opportunity that attendance interventions represent:

Your attendance management platform should offer these key capabilities:



Automated early warning systems that identify at-risk students before patterns take hold



Multi-channel family communication that reaches parents in their language & through their preferred method (texts, emails, phone calls, or an app)



Integrated data analytics that help staff understand individual student needs and district-wide trends.

Look for solutions that integrate seamlessly with your existing student information system, provide real-time ROI tracking, and reduce administrative burden rather than adding to it. The best platforms connect data, communication, and support systems while giving educators tools that actually work, not just more technology to manage.

★ Quick Win

Use this [K-12 Attendance Solution Scorecard](#) to evaluate different platforms before vendor meetings. This interactive rubric helps you score potential attendance solutions across key areas like data integration, family engagement features, staff efficiency, and ROI tracking. Having a systematic evaluation framework ensures you compare apples to apples and ask the right questions during demos.

[↓ Download the Attendance Solution Scorecard](#)

How SchoolStatus Attend Can Help

You've seen the data. You know the opportunity. Now here's how we help you capture it.

SchoolStatus Attend does what spreadsheets and manual processes can't: we help you spot attendance patterns before they become problems. When a student misses school, families get a personalized message the same day. Not a generic robocall. Not a form letter three weeks later. We also have proactive digital and mailed outreach that promote the importance of attendance all year long.

SchoolStatus Impact



75% More High-Value Administrative Time

Automated interventions eliminate manual attendance tracking and letter-stuffing, freeing up staff for higher-value work with students and families.



54% Student Return Rate After First Contact

Targeted communications get results fast, preventing revenue loss from chronic absenteeism.



Comprehensive ADA Tracking

SchoolStatus Attend integrates with your SIS to provide real-time insights into attendance trends and flag at-risk students early, so you can act before attendance impacts your bottom line.



Fully Automated Interventions

We handle the positive messaging, printing, and mailing to provide consistent communication to families without adding staff burden.



District Data Dashboards

Customizable reporting and intuitive dashboards make it easy to track interventions and report on program effectiveness by individual, class, school, or throughout the district.



Dedicated Implementation Support

Your professional service team will ensure smooth rollout and ongoing success, minimizing internal IT resource needs

Built for Districts, Backed by Results

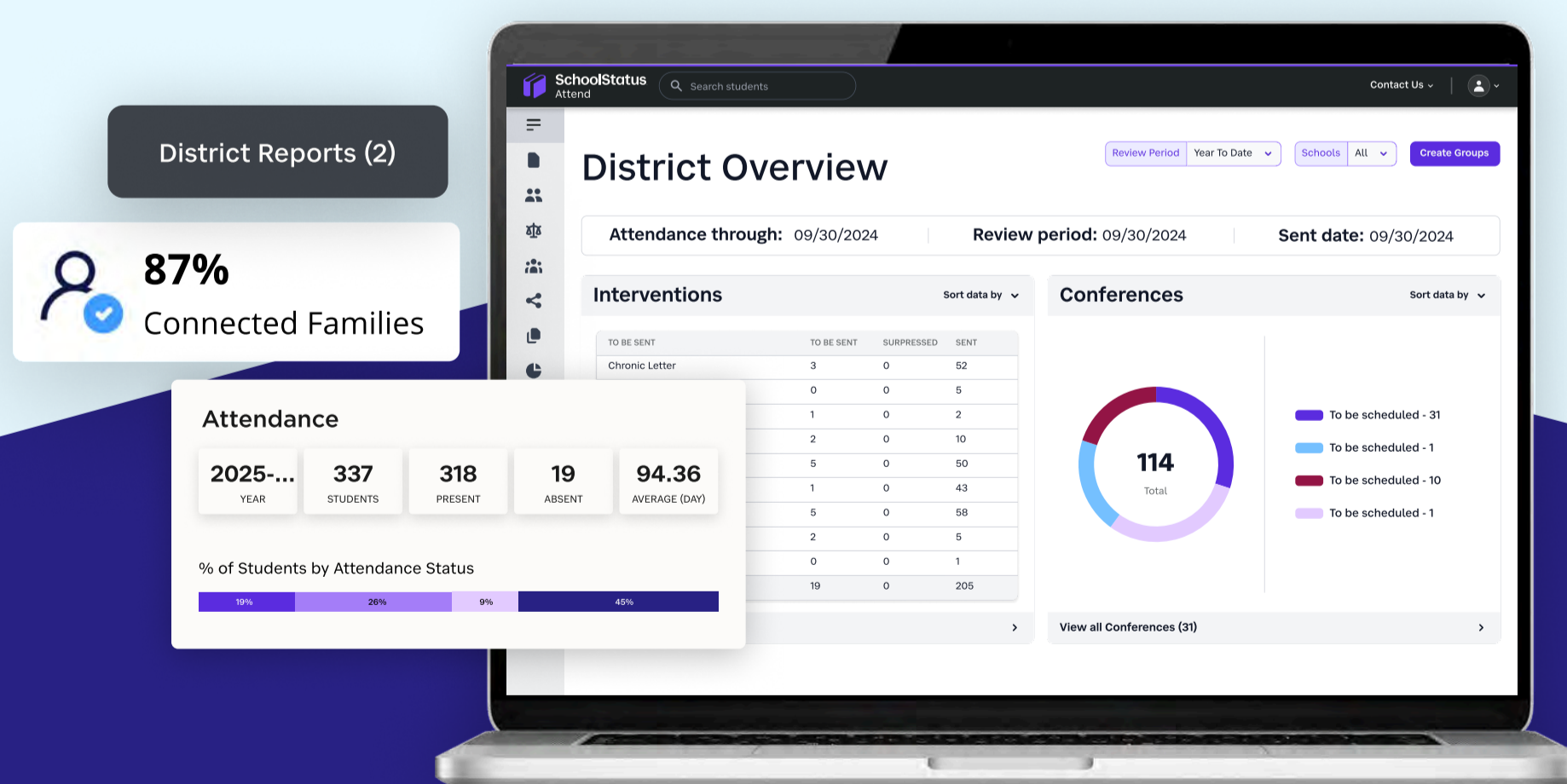
SchoolStatus works with thousands of districts serving 22+ million students across all 50 states. We've learned what works and what doesn't. Our solutions adapt to how your team operates, not the other way around.

The budget math is simple: Districts using SchoolStatus see up to 45% reduction in chronic absenteeism and 52% increase in excellent attendance. Most districts see positive returns within the first semester.

That means:

- Your attendance staff spend their time having conversations with families instead of generating reports
- Your principals get data they can use to make a difference right away
- You get clear tracking that shows exactly how much revenue you're recovering

The technology pays for itself through recovered ADA funding while your staff gets back hours of time every week.



Ready to turn lost revenue into recovered funding?
[Schedule a demo](#) to see SchoolStatus Attend in action.